

Together towards a more Circular Foodvalley Region

Team 2946:

Bram van Manen
Ella Carmi
Javier Playan
Mingwei Yang
Sjoerd Hermsen
Wenyuan Shu



26th of October 2022

Team Members



Ella Carmi

Biobased and Circular Economy



Mingwei Yang

Environmental Sciences



Bram van Manen

Business Studies and Entrepreneurship



Sjoerd Hermsen

Business Studies



Javier Playan

Business Economics in Food Industry



Wenyuan Shu

Environmental Sciences

Table of contents

01. Project (3 min)

- Problem description
- Stakeholders
- Research questions

02. Method (2 min)

- Circular Economy / Moerman's Ladder
- Data Collection/Interviews

03. Results (5 min)

- Industry data
- Connectivity

07. Discussion (10 min)

04. Evaluation (3 min)

- Current Bottlenecks
- Limitations

05. Conclusions (2 min)

- Report

06. Advice (5 min)

- Current Bottlenecks
- Conclusions
- Limitations



The Project

“Tracing food-losses and underutilized waste streams in the Foodvalley Region”



Problem description

- No clear overview of the companies
- Multifaced groups of stakeholders
- Awareness and Interest
- Legislation and Regulation

Stakeholders



01

Food and Feed Processors
Business 2 Business



02

Municipalities
Waste collectors



03

**Living Lab Regio
Foodvalley Circulair**
Commissioner

Not included:

Corporate Research Facilities

Farmers

HORECA

Brick and Mortar stores (e.g., local butchers)



Research Questions

Main Research Question:

“What **food waste streams** are currently being underutilised in the **Foodvalley region** that may be more optimally valorised according to **Moerman’s ladder**?”



Sub Research Questions

Identification

- What **food processors** are in the region and what waste streams do they produce?
- Which of these are underutilized according to **Moerman's ladder**?

Evaluation

- What **magnitude** are the waste streams compared to one another?
- Which one has the highest **impact** in terms of kilograms and CO2 footprint?
- What are the current bottlenecks preventing the valorisation of underutilized waste streams?

Advice

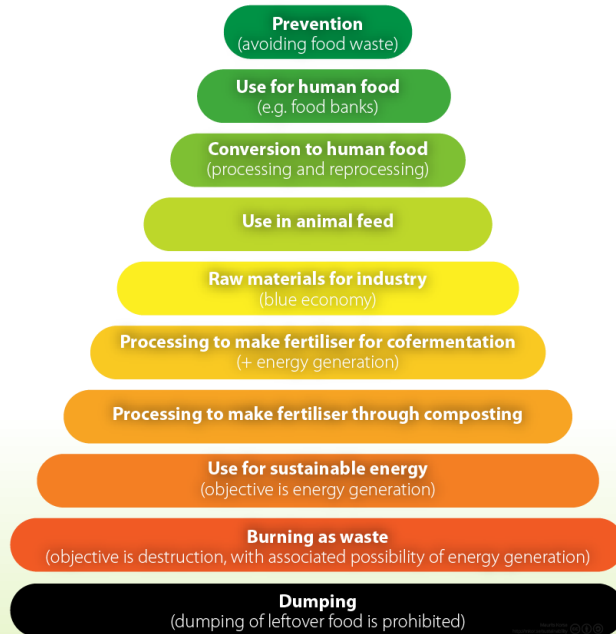
- How can existing **waste management strategies** from companies be improved in the Foodvalley region?



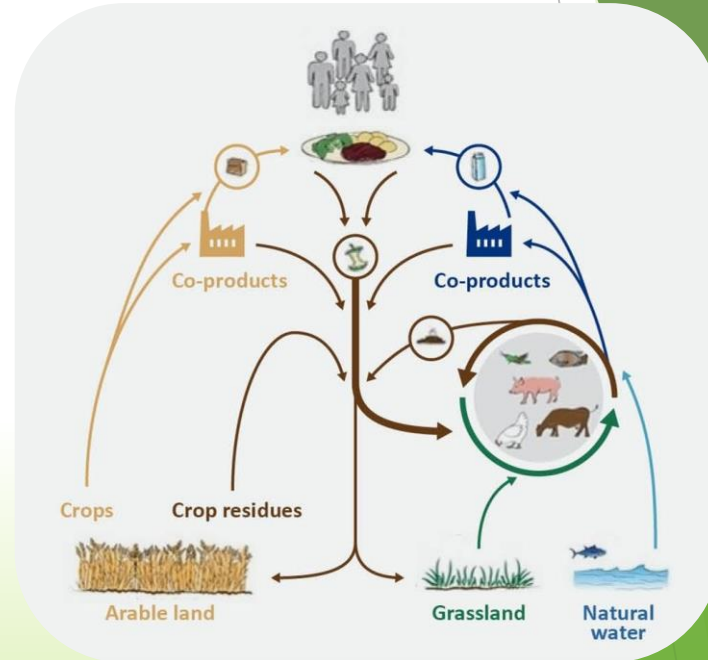
Background & Method



Moerman's Ladder

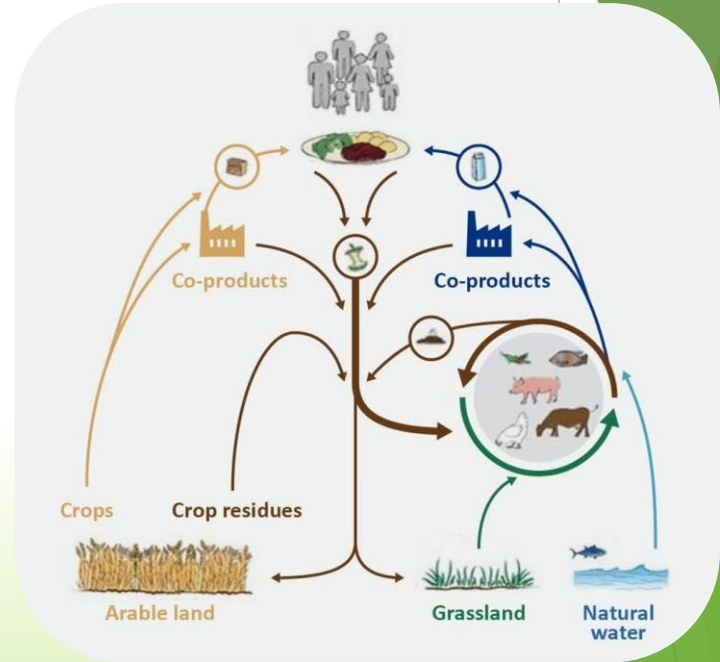


Circular Economy

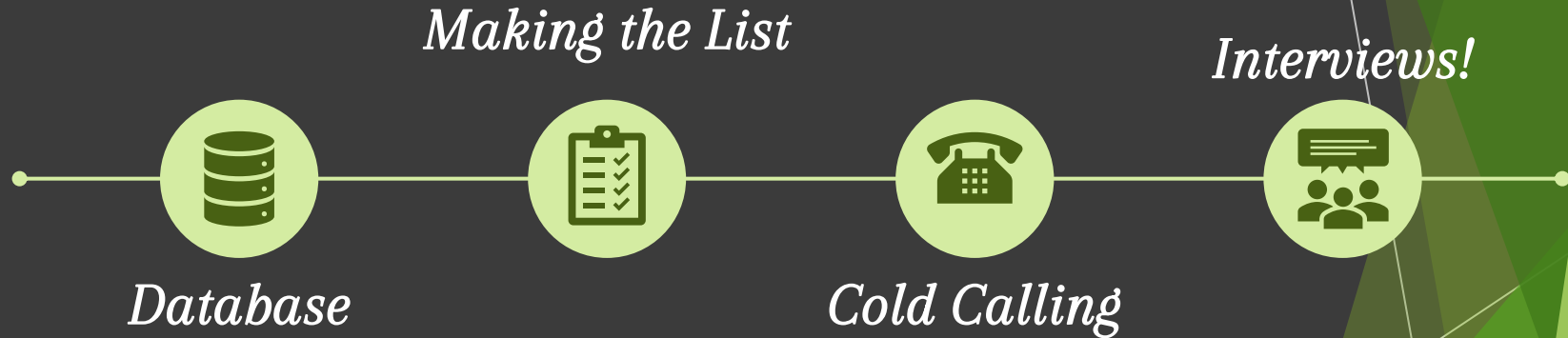


Circular Economy

“The circular economy (CE) is a closed-loop economic system that maintains the highest utility of raw materials, components, and products with minimal loss of value, uses renewable energy and takes system thinking as the core”



Data Collection



The Results

13

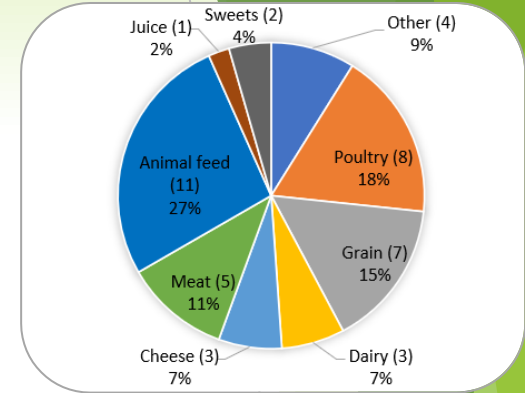


Industry Data

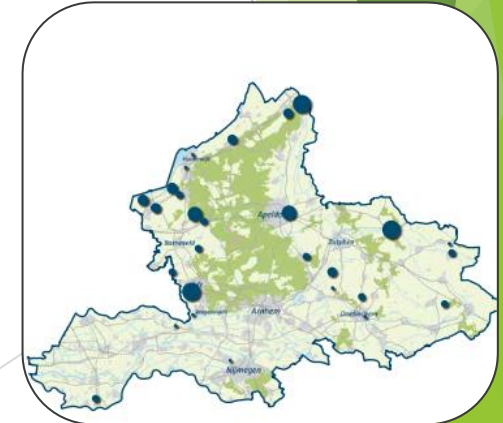
41 Food Processing Companies

with 45 local facilities

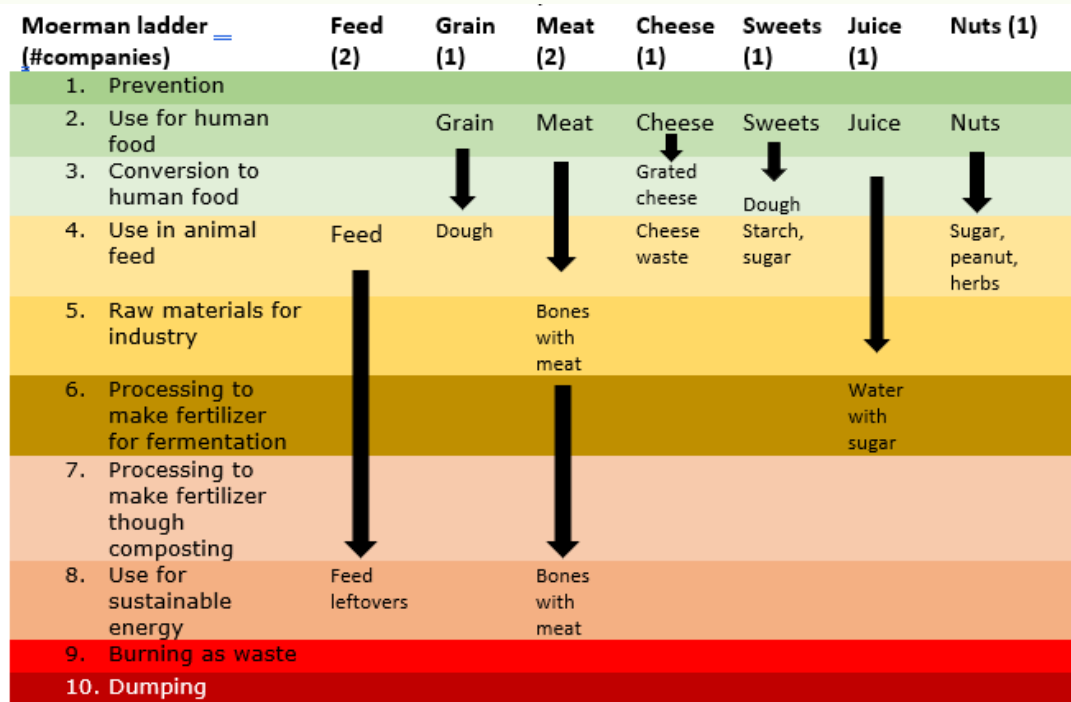
11 interviews were held



Industry type	Identified waste streams	Waste management
Grain Feed	Dough (16) Little quantities of animal feed (1). Negligible quantities of animal feed (6)	Sold to feed companies (16). If not suitable for animal feed, it will be used for energy production (1).



Moerman's Ladder



CO₂ Emission

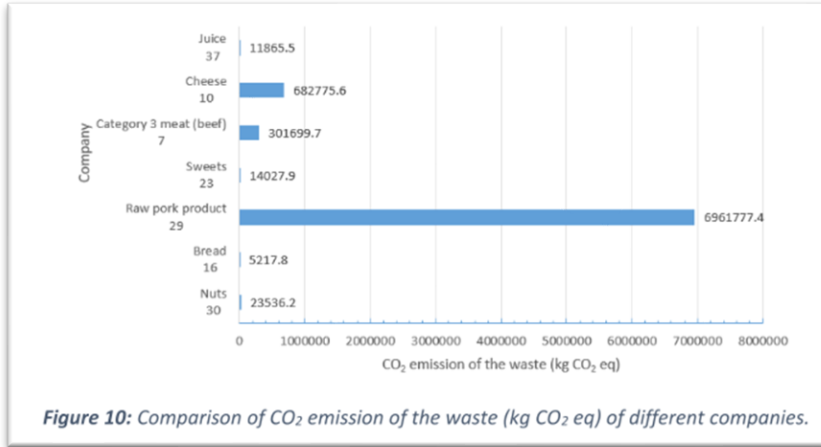


Figure 10: Comparison of CO₂ emission of the waste (kg CO₂ eq) of different companies.

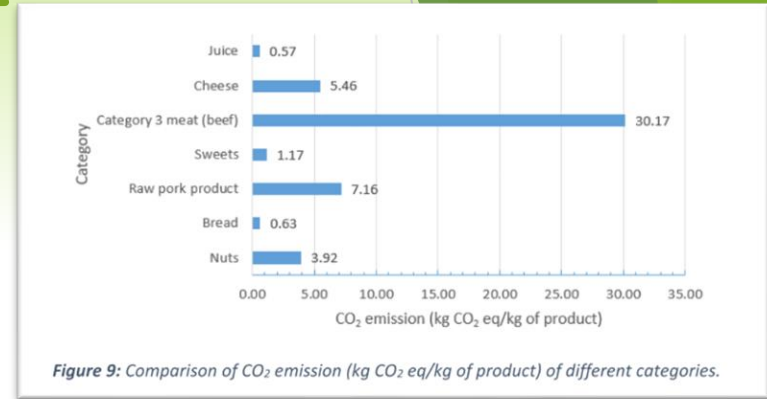
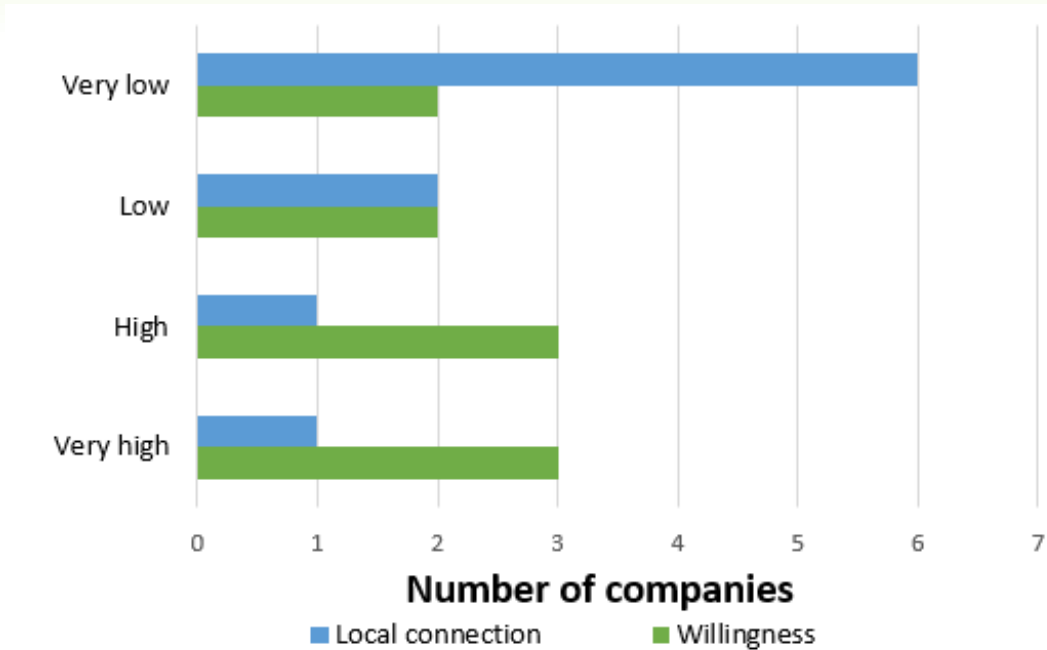


Figure 9: Comparison of CO₂ emission (kg CO₂ eq/kg of product) of different categories.



Figure 8: Comparison of quantities of waste monthly in different companies.

Willingness and Connectivity



Bottlenecks



Evaluation



Bottlenecks



01

Regulations & Food Safety

Waste as an input stream,
certificates, & allergens



03

Economies of Scale

Size of the companies &
constant streams



02

Nutritional Content

Even after food safety
regulations



04

Money

Transportation &
energy costs



Limitations

- Unwillingness of companies
- Confidentiality issues
- Time limitation
- Access to all the information and companies
- General nature of data



Conclusion

22



Conclusions

- Companies are efficient
- Inconsistent and mixed waste streams
- Exported outside the region
- Price of waste.
- Regulations



Advice

24



Advice

Short-term

- Connect existing food companies to the animal feed industry
- Awareness campaign (Food waste, Moerman's ladder & Regulations)
- Practical recommendations:
 - Meat industry has valuable waste
 - Explore poultry sector
- Common database/ social network

Long-term

- Integrate start-ups
- Keep waste streams in the region
- Increase the scope for larger food processors

Discussion



Let's Discuss (Questions?)



Thank you.



Thanks



For more information or questions:

bram.vanmanen@wur.nl

+316 83 57 98 82

wur.nl/act

